

WILLIAMS LAKE

June, 2019

www.williamslakecc.org

CONSERVATION COMPANY

ANNUAL GENERAL MEETING
MONDAY, JUNE 17 AT 7:00 P.M.

CAPTAIN WILLIAM SPRY CENTRE
10 KIDSTON ROAD

EVERYONE WELCOME

The WLCC is a non-profit volunteer organization. We welcome everyone who shares the WLCC's mandate to preserve the health of Williams Lake to come to our AGM.

Come to the AGM to learn about Williams Lake. We will have an opportunity to socialize and a representative of the Nature Conservancy of Canada (NCC) will be on hand to update us on the Urban Wilderness Park.



THE URBAN WILDERNESS PARK



HELP MAKE THE URBAN WILDERNESS PARK AT WILLIAMS LAKE A REALITY

The future Halifax Wilderness Park is closer to becoming a reality. The NCC launched the fundraising campaign this past September, and thanks to support at federal, provincial and municipal level, and contributions from many wonderful donors, there is only \$400,000 left to raise for this ambitious \$8 million project. Join other nature lovers and donate at keephalifaxwild.ca. Tax deductible donations can be made online or by phone, by contacting NCC's Halifax office at 1-866-319-5985. Please call NCC to discuss other ways to support this project, such as pledges or gifts of securities. With your help, the wilderness at Williams Lake will become a permanent sanctuary in the city. Come to the WLCC AGM to hear more.

ROAD SALT

This was a difficult winter for street ice, but the city seems to have stuck to the no-salting plan except for the first week, where we had to make calls about salting where there should have been sanding. Otherwise, we had few problems. The plan is still sand and not salt for Sagewood Lane, Willowdale Terrace, Birchview Drive, Wyndrock Drive, Saraguay Place, Albion Road, Wenlock Grove and Halls Road. Please check that you have sanding-only signs on the end of your street. Litchfield Crescent, because of bad cambers, should be saline sprayed or salted. Williams Lake and Purcells Cove Roads are priority streets that require sanding or salt according to conditions.

Early morning runners and pedestrians will tell you that the sanded streets were lethally slippery this year, so we are aware of council's concern about not salting our streets. However, we do our best to remind council of the perilous state of Williams Lake; the negative impact of street salting on our waters is unquestionable (See water testing, page 2). If you see salt where you should have none, please call 311. Council has responded promptly to these call in past.

WLCC WEBSITE

To find out more about the WLCC check us out :
on Facebook: Williams-Lake-Conservation-Company
or on our website: www.williamslakecc.org

Among other items you will find links to colour versions of the newsletters and a printable membership form.

LIVING NEXT TO A LAKE, WILDERNESS AND WILDLIFE

Tips and ideas

Many of us live close to Williams Lake. We are also urban dwellers. The following are some tips and ideas to live in greater harmony with the lake and its wilderness without much sacrifice to our urban lifestyle.

Prune Rather than Remove Trees

Mature trees help to prevent erosion and they reduce runoff into the lake from rainfall. Mature trees also add value to your home. They provide shade for wildlife. Think about pruning branches from your trees before cutting them down. Creative pruning can give you views of the lake without removing the trees completely.

Rethink the design of your lawn

If there are parts of the lawn close to the lake you do not use, think about allowing that area to grow back to the wild. A simple way to do this is to quit mowing and let nature take its course. This buffer will protect your shoreline from erosion and water quality. It will also reduce the amount of lawn you have to mow. Everything you put on your lawn will make its way into the lake so avoid fertilizers and chemicals which could impact the lake.

Keeping Wildlife in the Wilderness

Often wildlife intruders are looking for food or shelter. So keep pet food indoors. Don't feed the ducks or other wildlife. Make sure any garbage or compost outside is in "animal proof" containers. Make sure you have blocked any potential access into your house or storage buildings. Trim tree limbs that contact your house or outbuildings.

Lighting

Lighting at night can disorient wildlife and interfere with your neighbour's enjoyment of the wilderness. Light the road side of your house not the lake side. Think about installing motion sensor lights where lighting a path is necessary for safety.

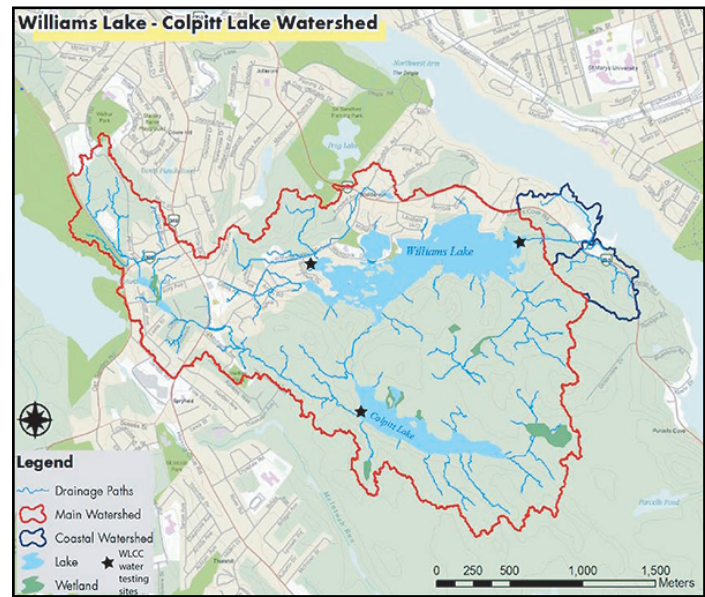
Tidy up

If you see garbage in or on the edges of the lake please pick it up. Make sure floating toys do not escape. Let's keep the lake as natural as possible.



Williams Lake Loon, June 1, 2019
Photo courtesy of Melanie Dobson

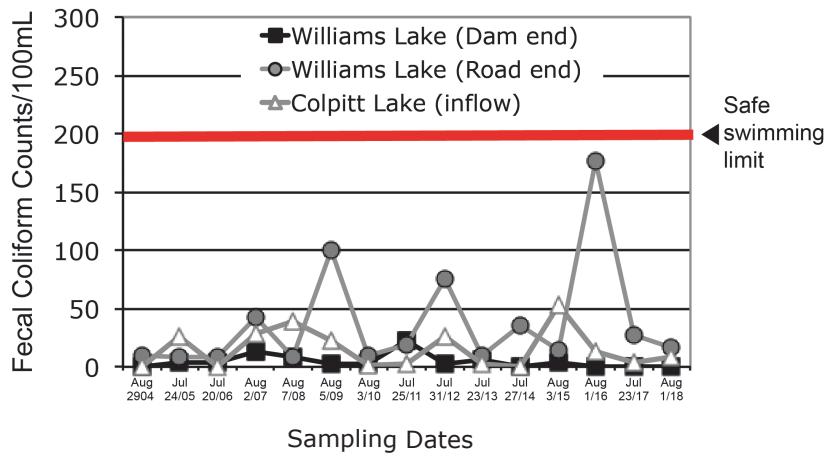
MONITORING LAKE WATER QUALITY



Your WLCC membership dues go towards the cost of testing Williams and Colpitt Lake water quality. We test bacterial levels every summer and have a full chemical analysis done every 3-5 years. Last year we also received a grant from HRM that helped defray the \$760 cost of chemical and biological testing for samples taken at our three regular testing sites (shown starred at left). We are still trying to get council to support a proposed monitoring project so that we can better inform ways to improve water quality in our wider watershed (see map at left).

Because of the long history of water testing by the WLCC, we were able to spot worrying increases in alkalinity, pH and iron levels in samples taken in 2015, the summer after HRM resumed salting on the streets near the lake in winter (see graphs below at left). Levels for these rose even higher in 2017. At the request of the WLCC, HRM went back to sanding those streets in 2017. Iron levels did drop last summer but are still high, especially at the end near Williams Lake Road which is still salted.

WLCC Lake Water Testing 2004-2018



COME JOIN THE WLCC

The Board needs your input and also new members. Is your area represented on the Board? The WLCC depends on its volunteers. Please contact any of the Board listed below to volunteer or suggest a name. We encourage you to attend the AGM and look forward to seeing you on Monday, June 17th.

BOARD OF DIRECTORS 2018-2019

- Paul Cashman • Litchfield Crescent • 902-431-0553
- Murray Coolican • Birchview Drive
- Melanie Dobson • Wyndrock Drive • 902-477-0668
- Kathleen Hall • Hall's Road • 902-477-4159
- Martha Leary • Redwood Avenue • 902-420-1520
- Karen Lyle • Wenlock Grove • 902-429-1742
- Leslie Randall • Wyndrock Drive
- Nick Ross • Kirk Rd
- Anne von Maltzahn • Wenlock Grove • 902-477-3353
- Robin Whyte • Wyndrock Drive • 902-477-6744
- Philip Howard • Webmaster • Wyndrock Drive

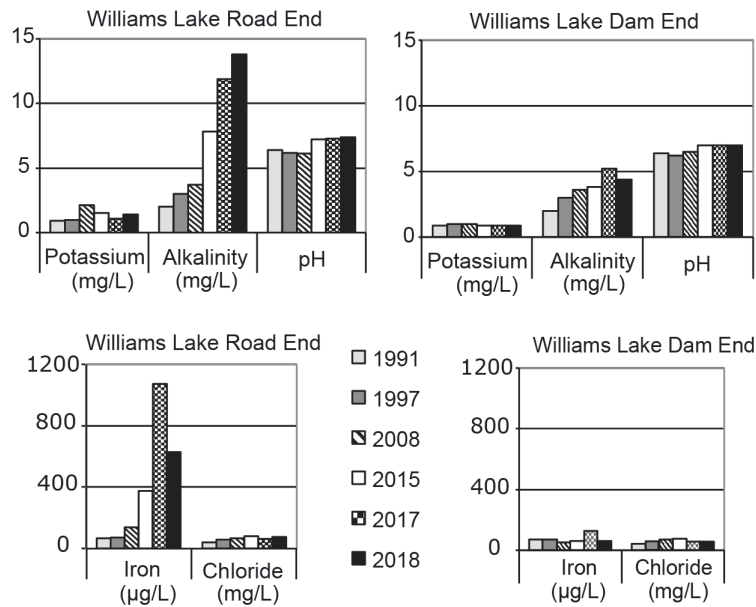
WLCC MEMBERSHIP

WLCC membership is \$20 per household and can be paid at the AGM or by returning the attached form.

(The form is also available through our website at www.williamslakecc.org)

Heather Watts's history of the Williams Lake area is \$5 when renewing or joining, additional copies are \$10 each. The mandate of the WLCC is to protect the health of Williams Lake. **Everyone who shares this goal is welcome as a member!**

Chemical testing of the lake water 1991-2018



Samples for chemical testing are taken in summer at the same times and sites as samples taken for biological testing. Most values have stayed at similar levels since 1991 which is reassuring. (See our website for complete results).

MEMBERSHIP FORM \$20. (\$80. FOR 4 YEARS)

To: WILLIAMS LAKE CONSERVATION COMPANY, % Melanie Dobson
11 Wyndrock Drive, Halifax, NS B3P 1R8

NAME: _____

ADDRESS: _____

PHONE: _____ EMAIL: _____

