

STOP INVASIVE SPECIES



Multiflora Rose *Rose multiflora*



It may look pretty



but it doesn't belong...

Alias

Rambler Rose
Multiflower Rose

ID

Woody shrub, 3m tall/4m wide, green to red stems with large curved thorns
Blooms May-June, white-pink flowers in clusters
Oval serrated leaves with short underside hairs

Impact

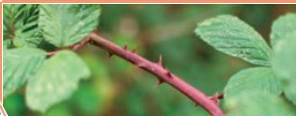
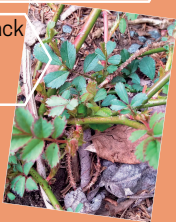
Readily invades gardens and the forest edge, wetlands, roadsides, and trail margins where it can outcompete native species.

What to do

Especially important to catch early on
Cut/mow back to ground level to prevent further spread by seed.
Excavate the stump/root system



DO NOT COMPOST! Seal in black plastic, dry in direct sun (1-3 weeks), then double bag for HRM garbage pick up or burn



Brought to you by the Williams Lake Conservation Company - williamslakecc.org